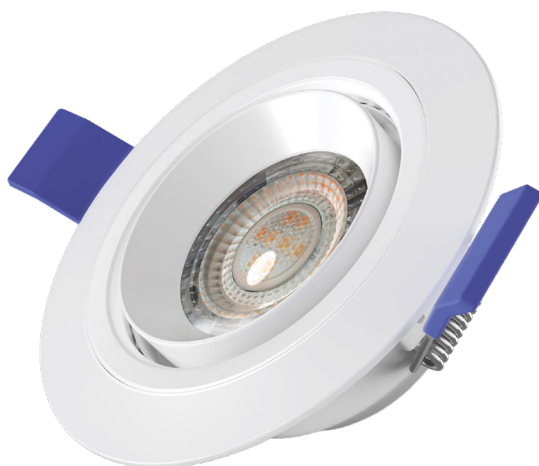
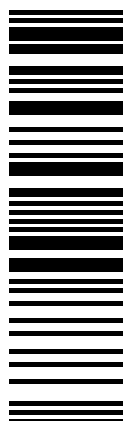
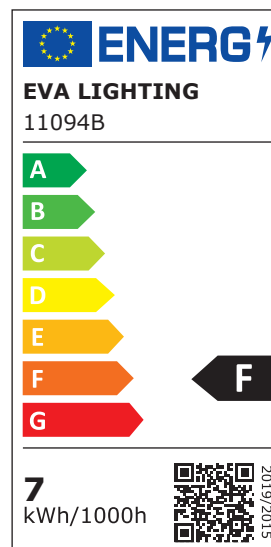
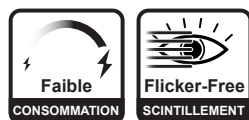


# FICHE TECHNIQUE

## FALCON EYE



FAIBLE CONSOMMATION  
FLICKER-FREE



### Informations techniques

|                             |                     |                                      |               |
|-----------------------------|---------------------|--------------------------------------|---------------|
| <b>Référence</b>            | <b>11094B</b>       | <b>Température de Fonctionnement</b> | -15°C à +40°C |
| <b>Puissance</b>            | 7W                  | <b>Matériau</b>                      | Polycarbonate |
| <b>Facteur de Puissance</b> | 0,5                 | <b>Durée de Vie</b>                  | L70 20000h    |
| <b>Colorimétrie (CCT)</b>   | 4000K               | <b>Garantie</b>                      | 2 ans         |
| <b>Flux Lumineux</b>        | 650lm               | <b>EAN</b>                           | 3700890408883 |
| <b>Fil Incandescent</b>     | 650°C               | <b>Accessoires</b>                   | -             |
| <b>Dimmable</b>             | Non                 |                                      |               |
| <b>Switchable</b>           | Non                 |                                      |               |
| <b>Inclinable</b>           | Oui                 |                                      |               |
| <b>Orientable</b>           | Non                 |                                      |               |
| <b>Angle de Diffusion</b>   | 38°                 |                                      |               |
| <b>IRC</b>                  | >80                 |                                      |               |
| <b>IP</b>                   | 20                  |                                      |               |
| <b>IK</b>                   | -                   |                                      |               |
| <b>Classe de Protection</b> | II                  |                                      |               |
| <b>Couleur</b>              | Blanc               |                                      |               |
| <b>Dimensions</b>           | Ø90*35mm            |                                      |               |
| <b>Ø Coupe</b>              | Ø68-70mm            |                                      |               |
| <b>Tension Primaire</b>     | AC220-240V, 50/60Hz |                                      |               |

### Dimensions

